



Welcome to the Cowes Week Skippers' Briefing



Fundamental Rule 3

“
The responsibility for a boat’s
decision to participate in a
race or to continue racing is
hers alone
”



Amendments

- Any amendments will be posted on the ONB before 0830 on the day it will take effect.

Race Schedule

- Race schedule is published as a separate document to the Sailing Instructions. The schedule can be changed up to one hour before the race start although we will aim to announce any changes by 2030 the previous evening

Not sailing

- If you are not sailing, please tell us by using the Did Not Compete button on the app



RYS Start lines

- RYS Start Line 1: transit between RYS flagpole and the white line on the orange diamond on the RYS roof.
- ODM (Alpha - 8A) will not be on the start line.
- RYS Start Line 2: between the flagpole and Beta (8B) this is not a transit but an imaginary line.
- Direction of the start: indicated by a flag in the RYS haven – Green for West, Red for East

CV lines

- Imaginary line between orange flagstaff and ODM.

Keeping Clear

- Five-minute rolling sequence: boats are required to keep clear of boats already in sequence (SI 12.4)



RYS Start lines



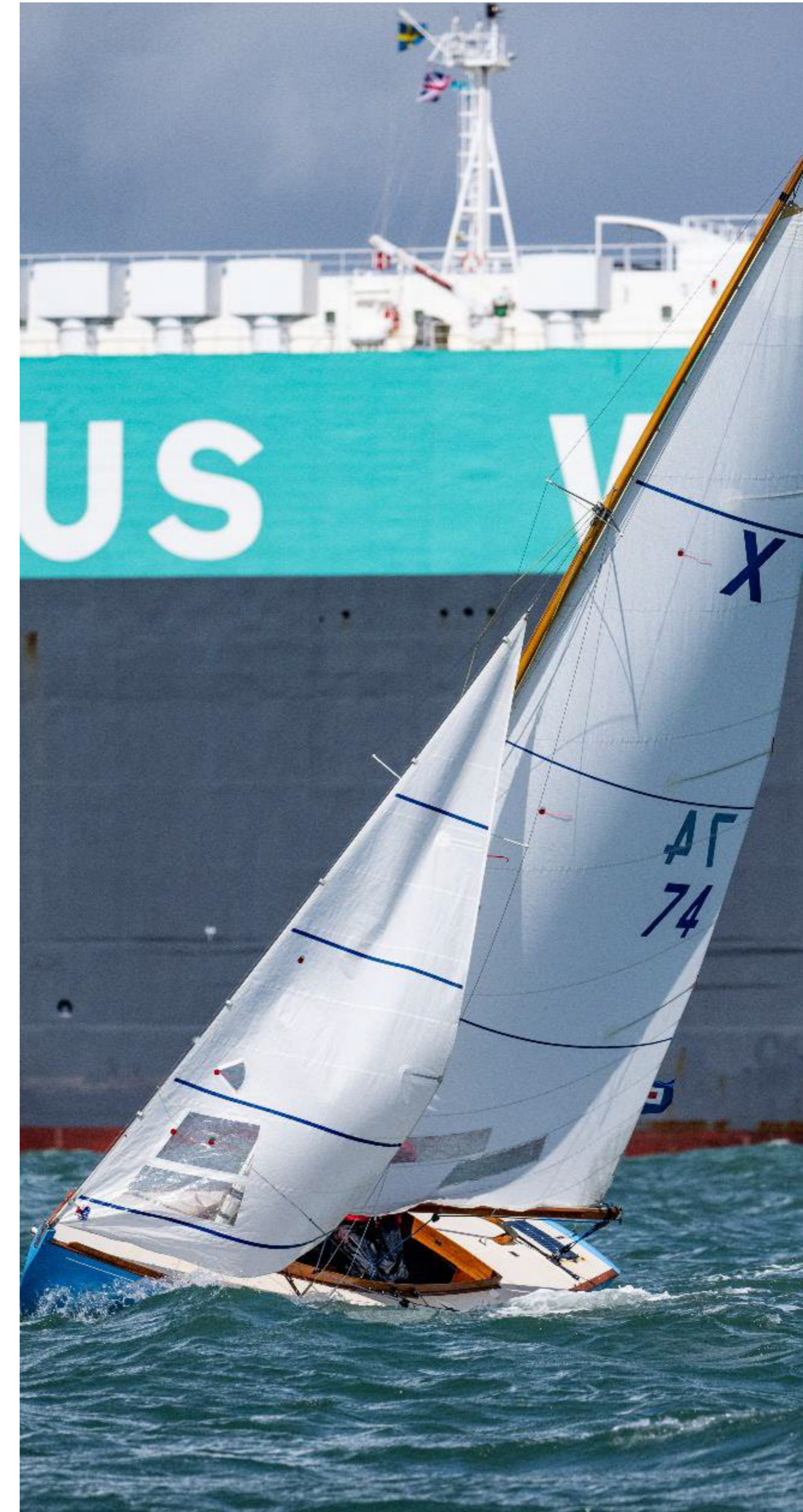
VHF

- **General information and start lines for classes.**
Course announcements for boats starting on an RYS line
Channel 22
- **RYS Starts**
Channel 03
- **CV Starts**
CV 1 – Channel 02
CV 2 – Channel 04
CV 3 – Channel 05
- **Comms with race committee/retirements**
Channel 77
- **Emergency/Coastguard**
Channel 16

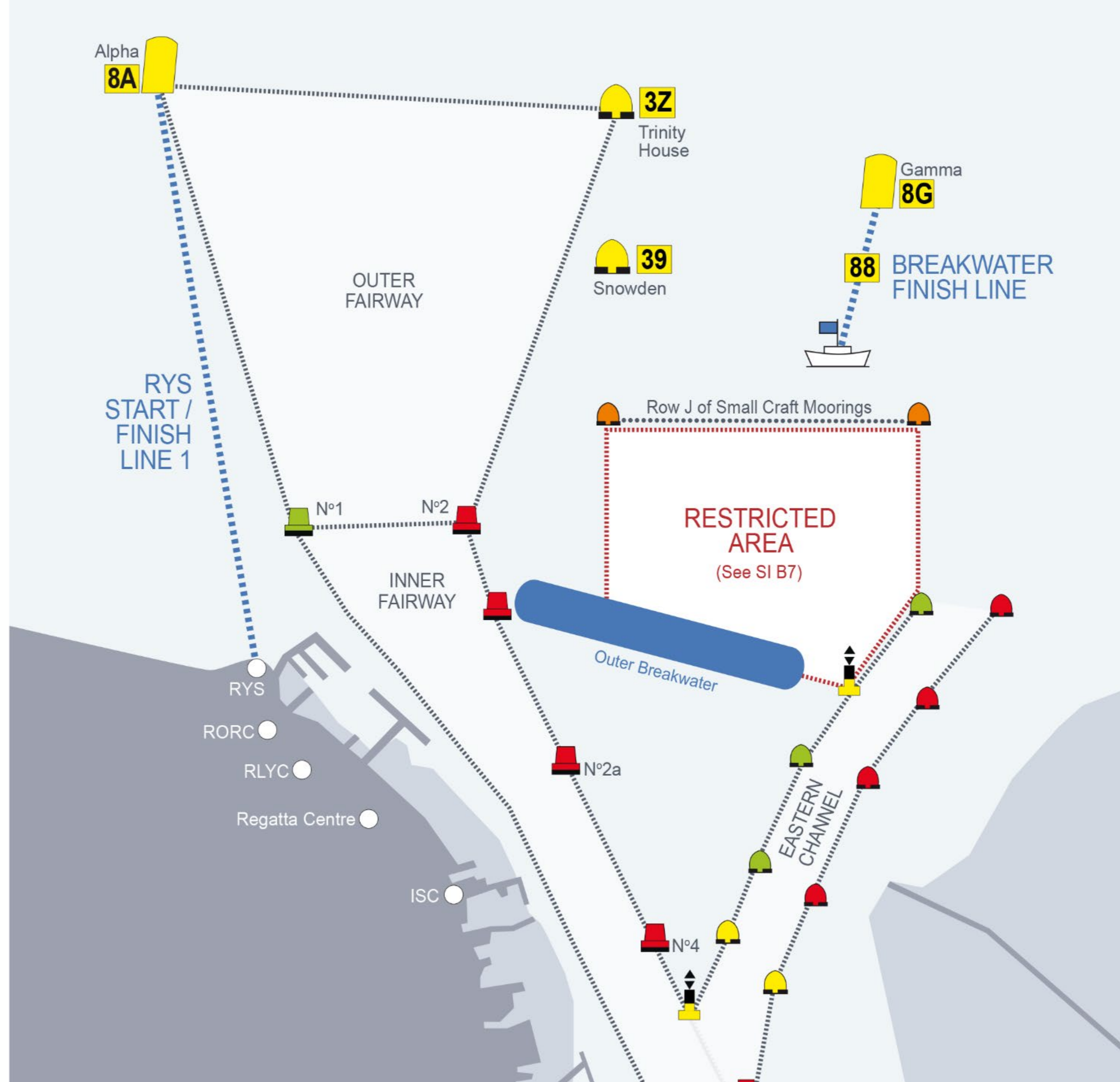


Restrictions

- Small craft moorings – keep North of the moorings (row J) when racing, mooring rank J is an obstruction.
- Cowes Breakwater – keep North of Cowes breakwater.
- ABP Notice to Mariners number 6 of 2024 – moving prohibited zone.
- CHC general directions and NtM



Restrictions



Courses

- Courses as per table 4 of the SIs
- Courses displayed on the App and also announced on VHF
- Boats on CV starts may use the defined windward/leeward courses

Finish lines

- Indicated by the last mark ID of the course.
- RYS finish line (81) between the RYS flagpole and Alpha (8A)
- RYS Outer line between Alpha (8A) and Williams Shipping (3W)
- Breakwater Finish Line (88) between Gamma (8G) and a blue flag on a CV positioned nearby.



Declarations

- Easiest on the App
- Must be made within 60 minutes of the boat finishing her final race of the day.
- Select 'My Regatta' from the bottom menu and then 'Declare' from the top tab.
- Or by calling +44 1983 295744
- Retirements by App (best) or VHF 77

Protests

- Lodged in writing at the regatta office
- Sat – Thurs within two hours of finishing
- Fri – within one hour of finishing



Time penalties

- RRS 44.2 turns replaced by a 1% time penalty except J/70 and SB20 Sat – Tues
- Z Flag penalty – 3% time penalty
- Acceptance of time penalty by displaying a yellow flag until finished





Captain Barry Sadler

1st Class Pilot Unrestricted
Container Ship Specialist Pilot

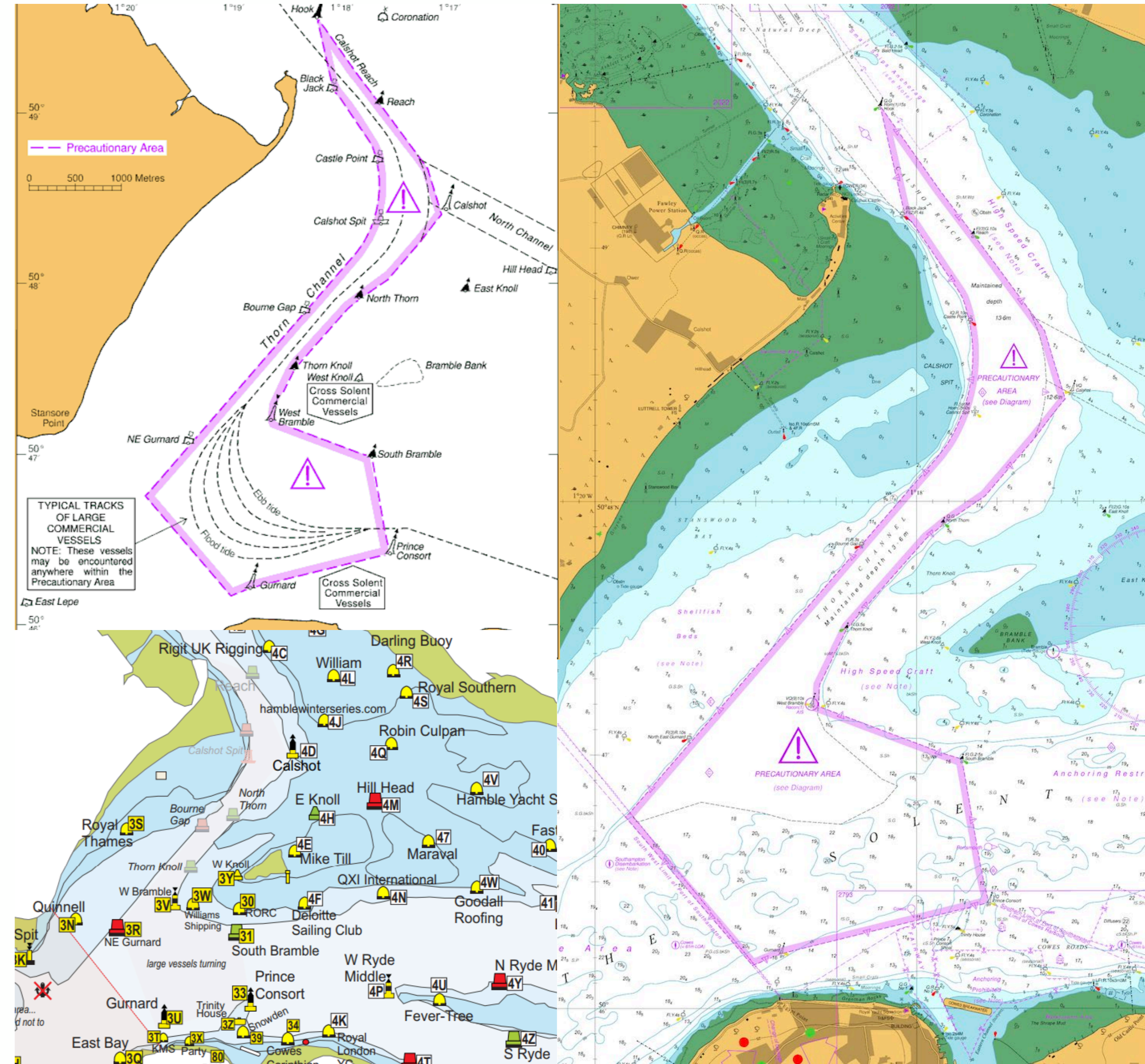
Commercial and Leisure: Safely sharing the same water



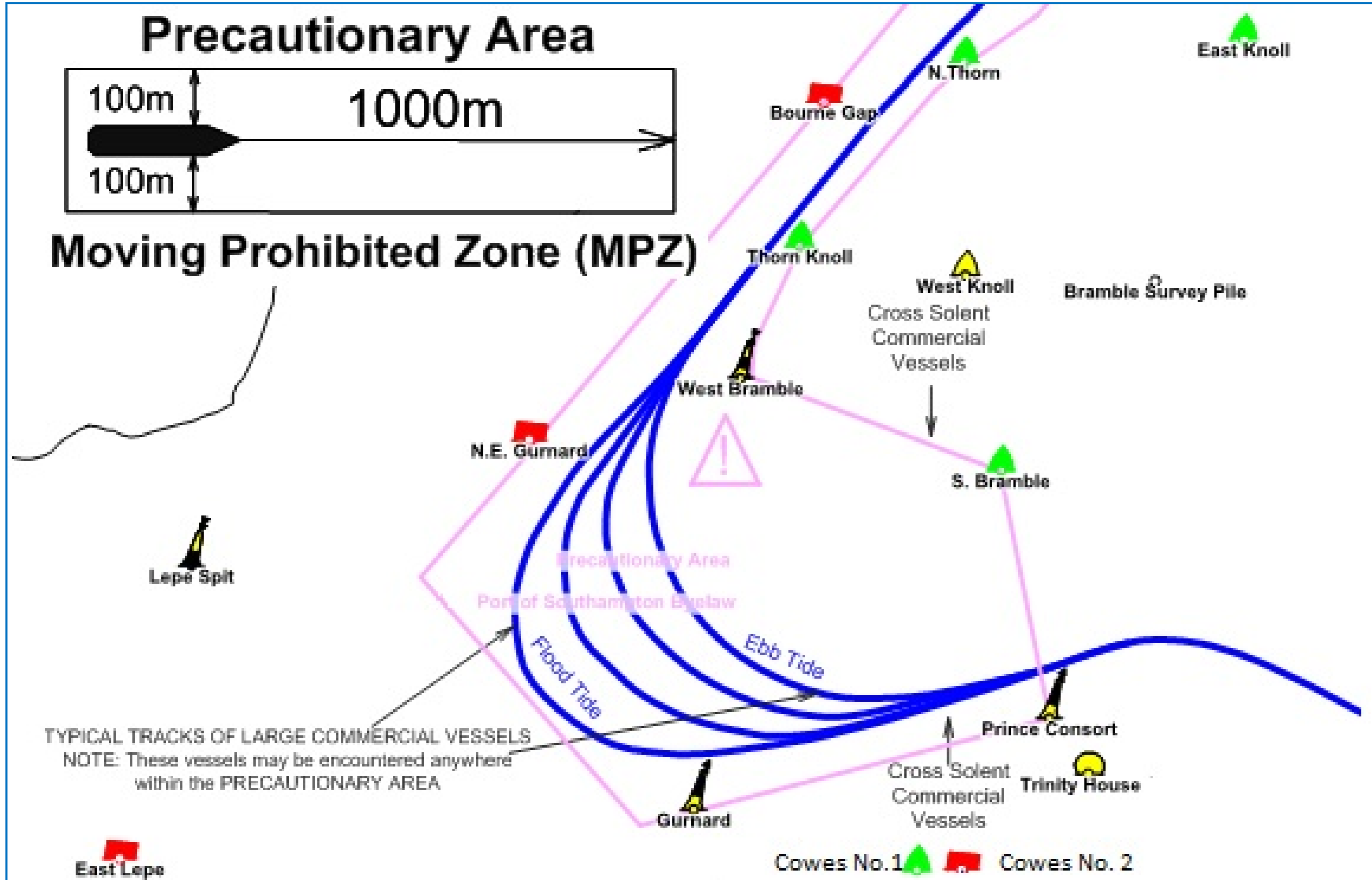
Precautionary Area

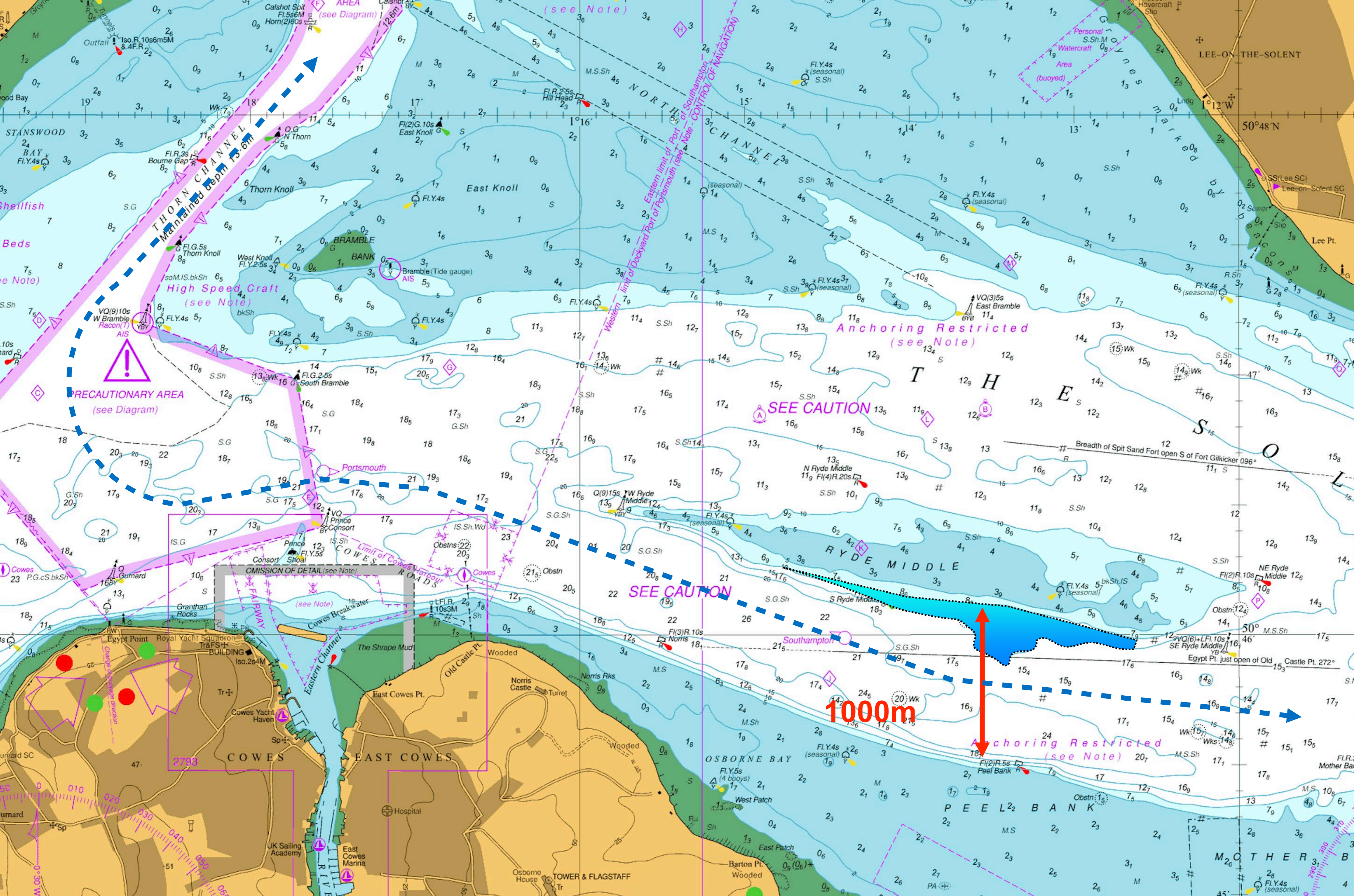
Established under the Southampton bye-laws, the precautionary area introduces the moving prohibited zone (MPZ):

“ Vessels under 20m and sailing vessels must stay 1000m ahead and 100m either side of any vessel in the PA over 150m. ”



Precautionary Area





PRECAUTIONARY AREA
(see Diagram)

High Speed Craft
(see Note)

Anchoring Restricted
(see Note)

SEE CAUTION

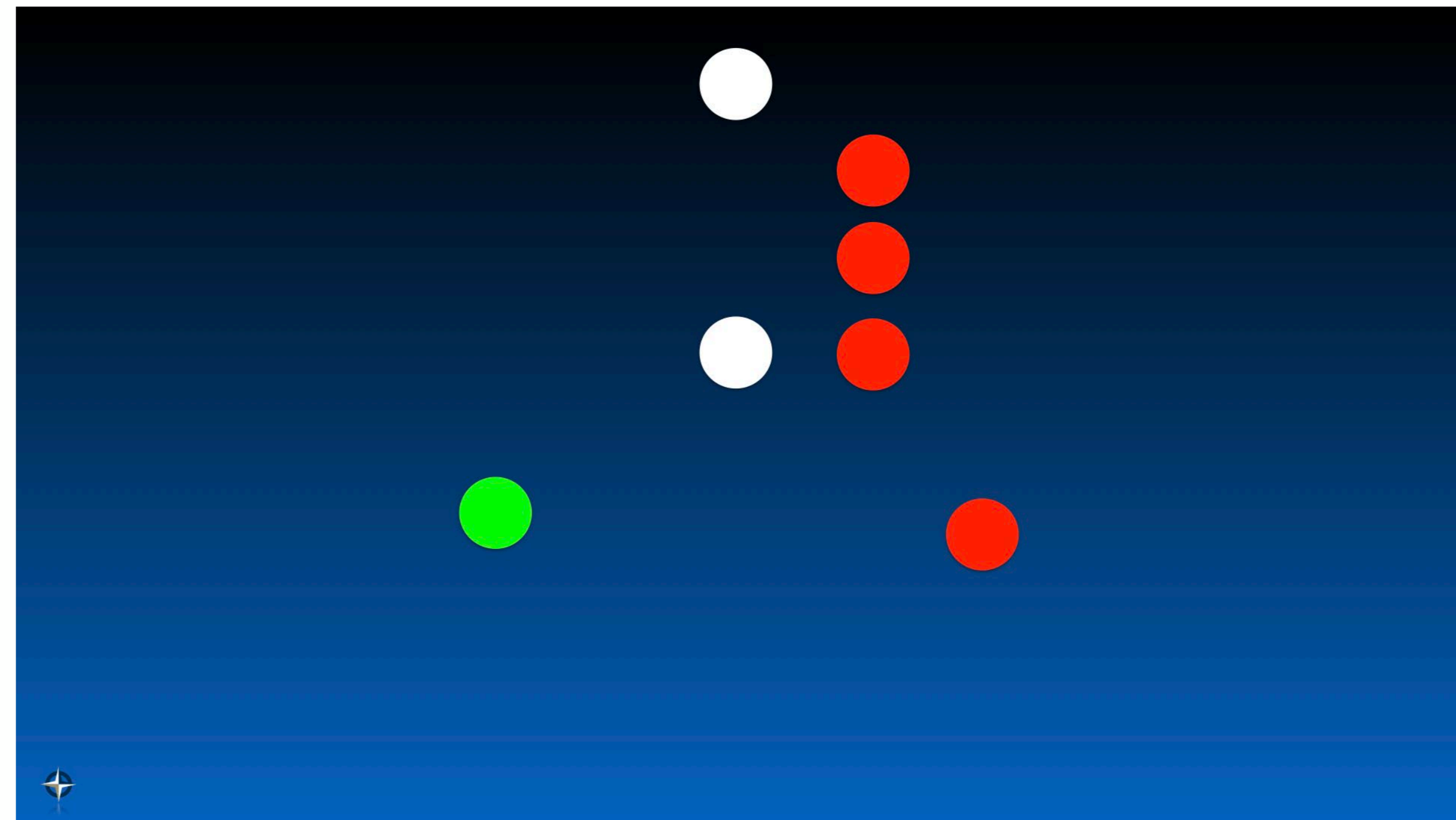
SEE CAUTION

1000m

Anchoring Restricted
(see Note)

2783

All vessels < 150m



Can we be seen?



The view from the bridge



Southampton Patrol



What can you do?

Take Early Action



**Obey Harbour
Master Instructions**



What does it mean to Impede?

To approach so as to involve a risk of collision or close quarters situation

To give cause for concern to the master and pilot of the ship

To not take early action to avoid either of the above

In the Thorn to pass within 1000m ahead or 100m either side of the ship

To move out of sight of the bridge team giving cause for concern



Further information

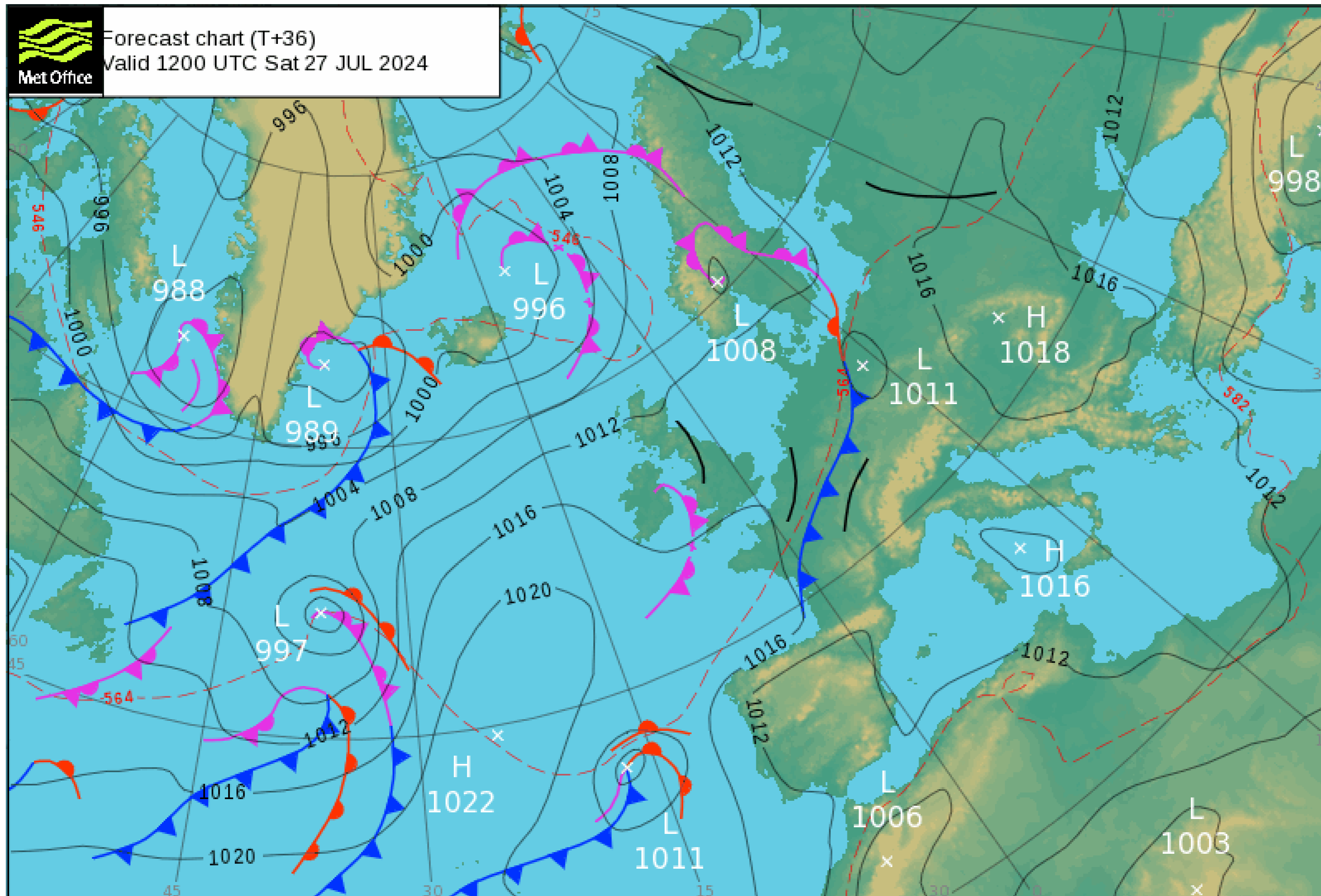
ABP | ASSOCIATED
BRITISH PORTS

Marine Leisure Guide

Your guide to safe watercraft operation
in and around the Port of Southampton

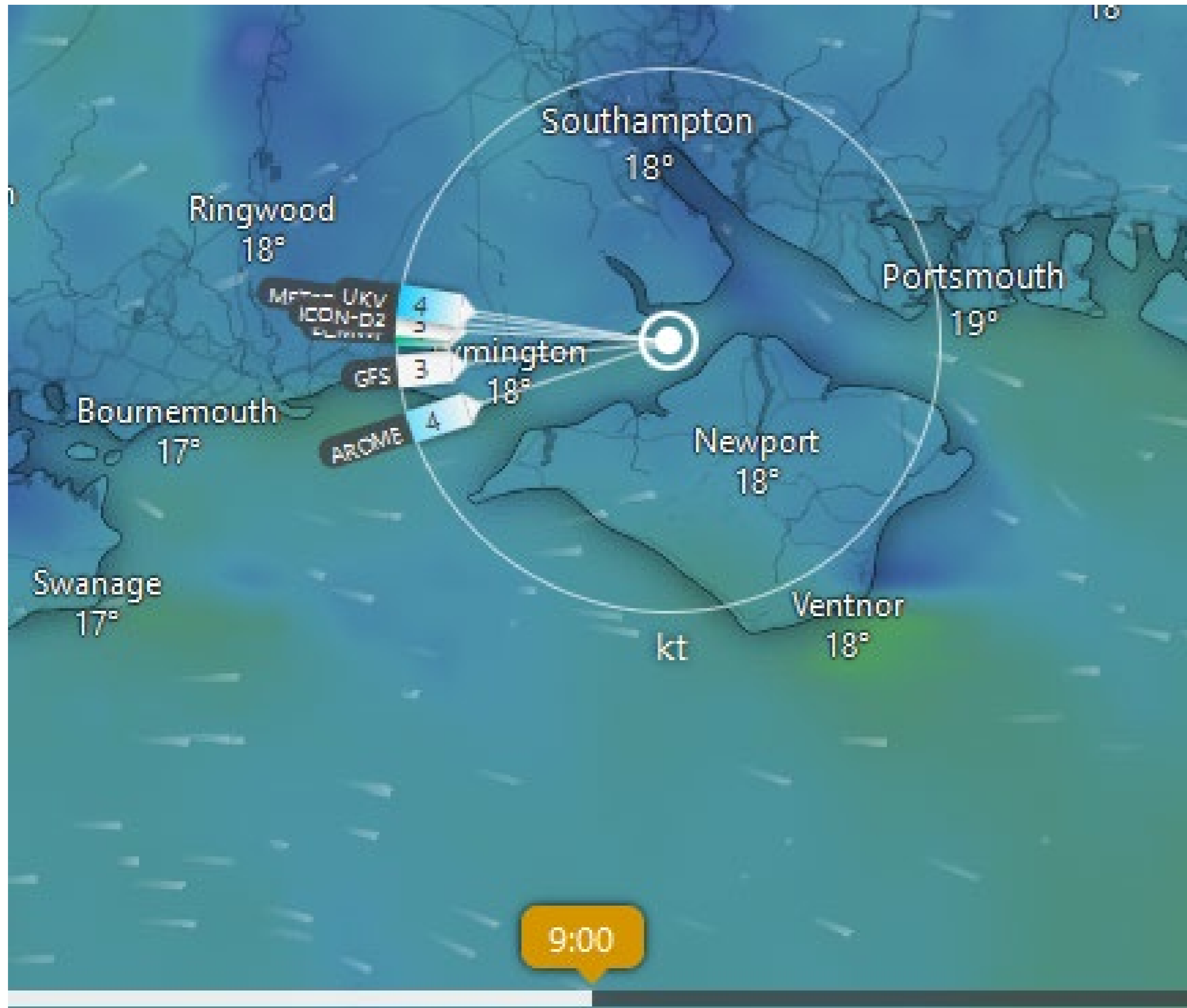


Weather - Saturday



Light WNW'ly gradient.
SW'ly sea breeze
developing as cumulus
cloud develops over the
land.

Weather - Saturday

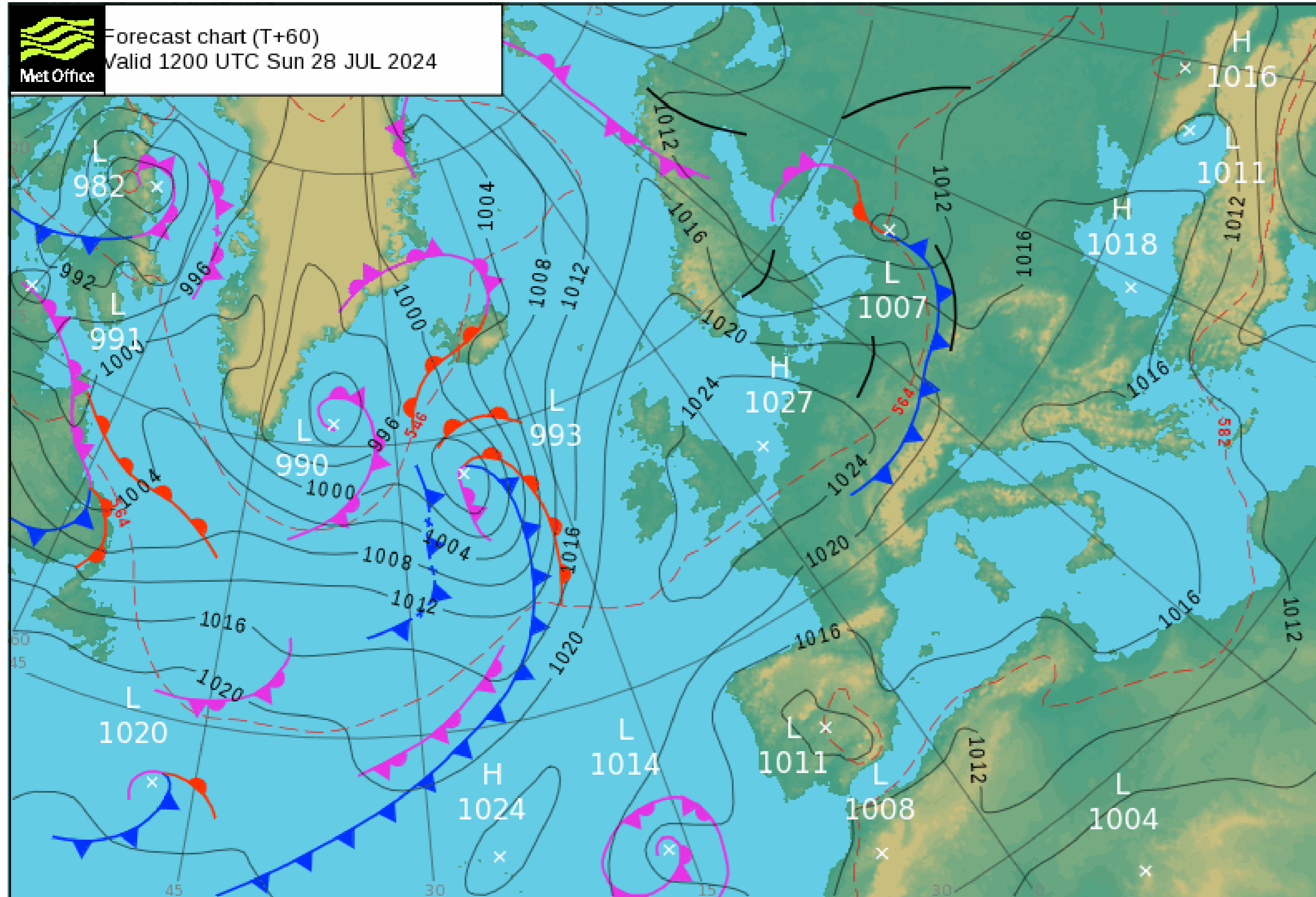


Pre sea breeze 0900



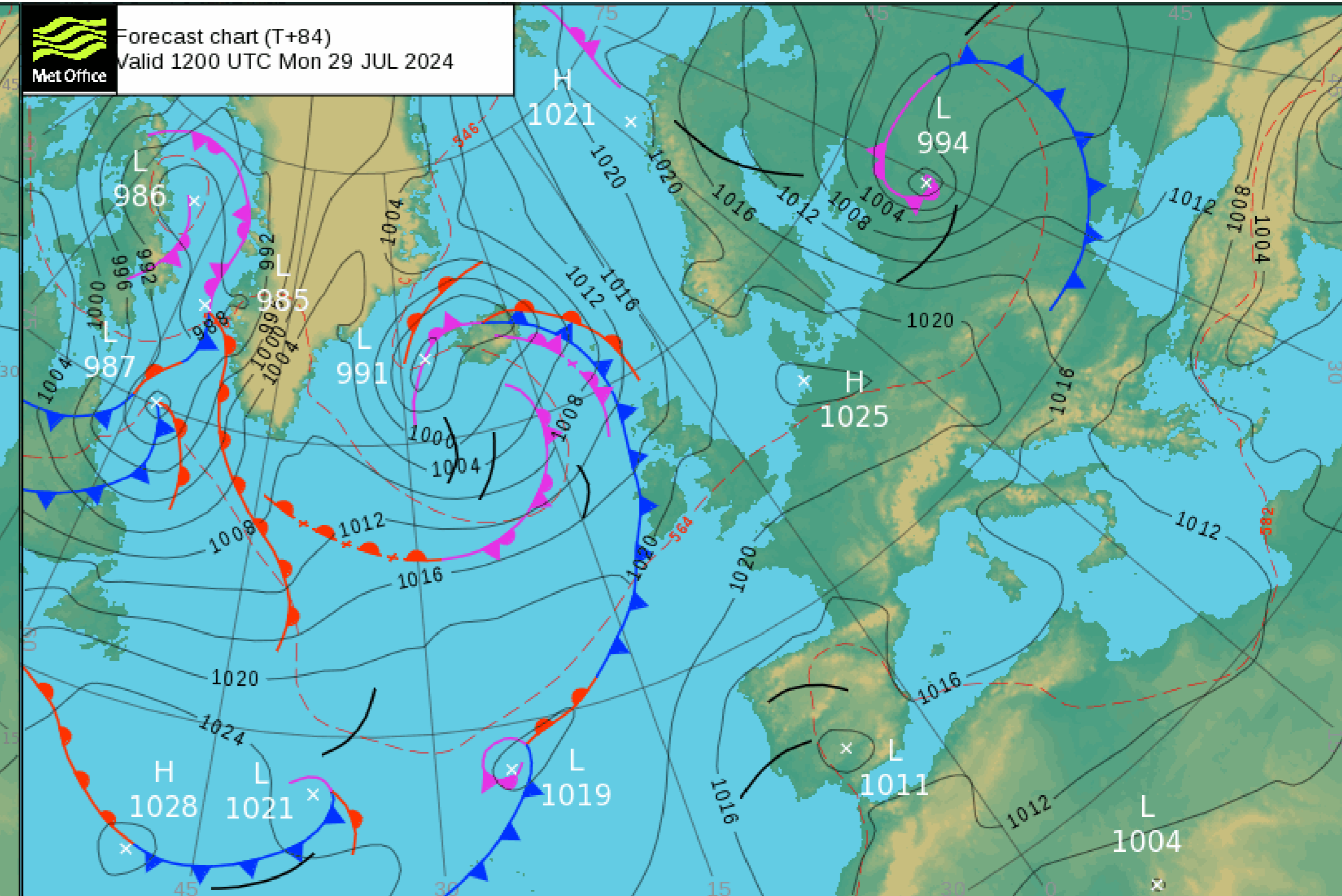
Sea breeze developed 1200

Weather - Sunday



Light winds – sea breeze?

Monday



Dry and hot with a moderate E'ly breeze

Forecast from Windy

Strong– moderate SW'ly as wind funnels up Solent (UKV overdoes gusts)

Reasonable confidence of moderate E'ly

Another less certain sea breeze day

	Friday 26				Saturday 27				Sunday 28				Monday 29				Tuesday 30																			
Hours	13	16	19	22	1	4	7	10	13	16	19	22	1	4	7	10	13	16	19	22	1	4	7	10	13	16	19	22	1	4	7	10	13	16	19	22
UKV 2km	15	14	13	7	5	2	5	7	15	19	16	6	5	3	2	2	11	6	1	4	7	10	10	11	12	12	7	1	6	6	8	5	3	12	10	10
GFS 22km	12	13	11	7	5	4	3	5	9	12	8	8	5	4	3	3	7	6	5	5	6	7	6	7	8	7	4	3	4	6	5	8	10	5	6	6
ECMWF 9km	10	11	10	6	3	4	3	5	9	11	9	4	4	4	4	2	4	6	4	4	7	8	8	10	10	10	8	6	6	6	6	7	8	6	6	5
METEORBLUE	13	13	12	8	4	3	3	5	12	14	11	6	5	3	3	2	5	5	4	3	4	6	6	7	8	7	5	2	3	3	4	2	4	6	2	1
CON-D2 2.2km	14	13	13	9	5	3	3	5	12	15	12	6	5	3	3	3	5	7	5	3	4	6	6	9	8	8	6	2	3	3	4	5	7	8	0	2
AROME 2.5km	12	13	14	12	8	3	6	8	12	17	12	4	4	4	4	2	4	6	4	4	7	8	8	10	10	10	8	6	6	6	6	7	8	6	6	5

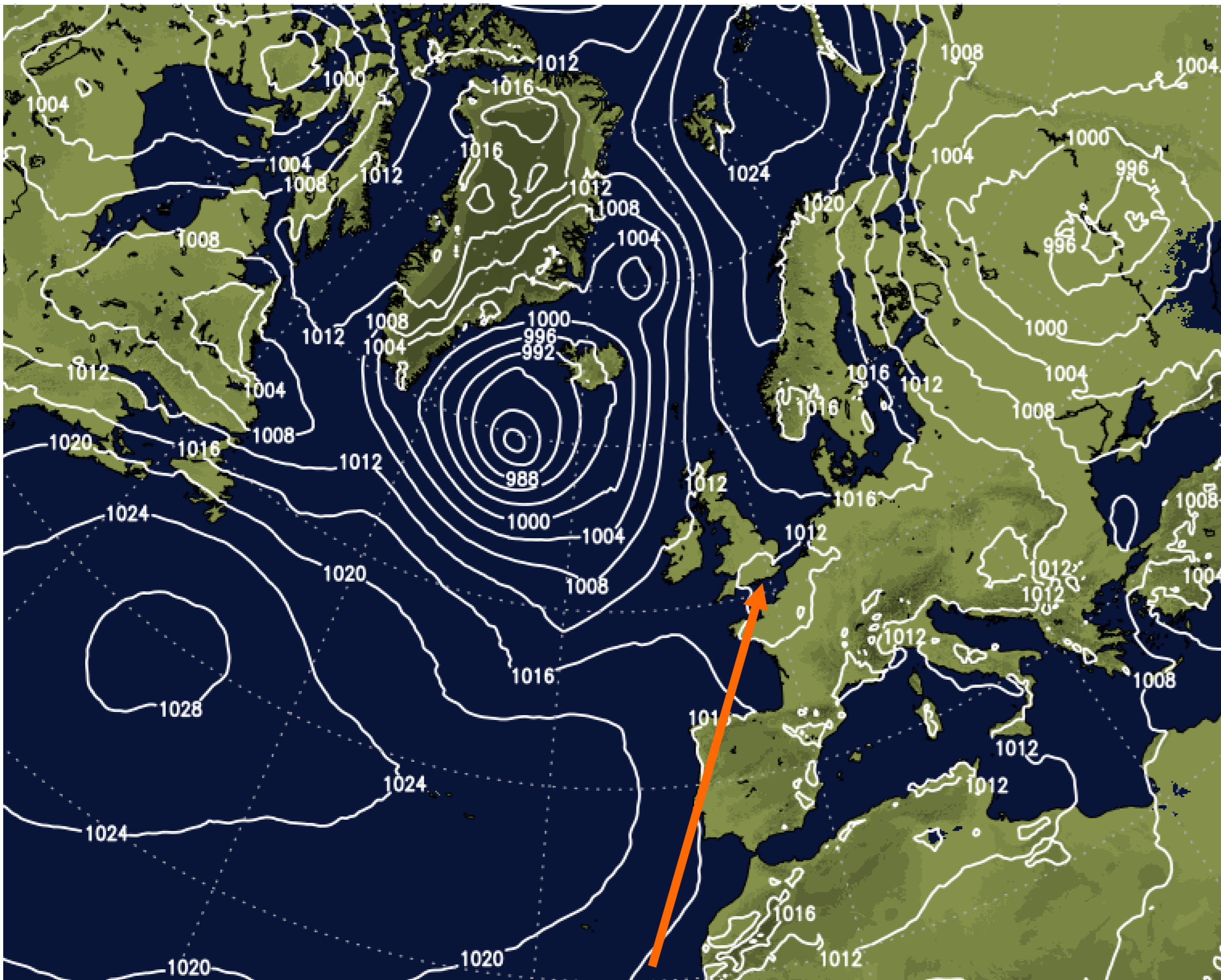
Tricky sea breeze day

Weather - Wednesday

Run: Fri 26/07 06Z

Sea Level pressure

Valid: Wed 31/07 12:00

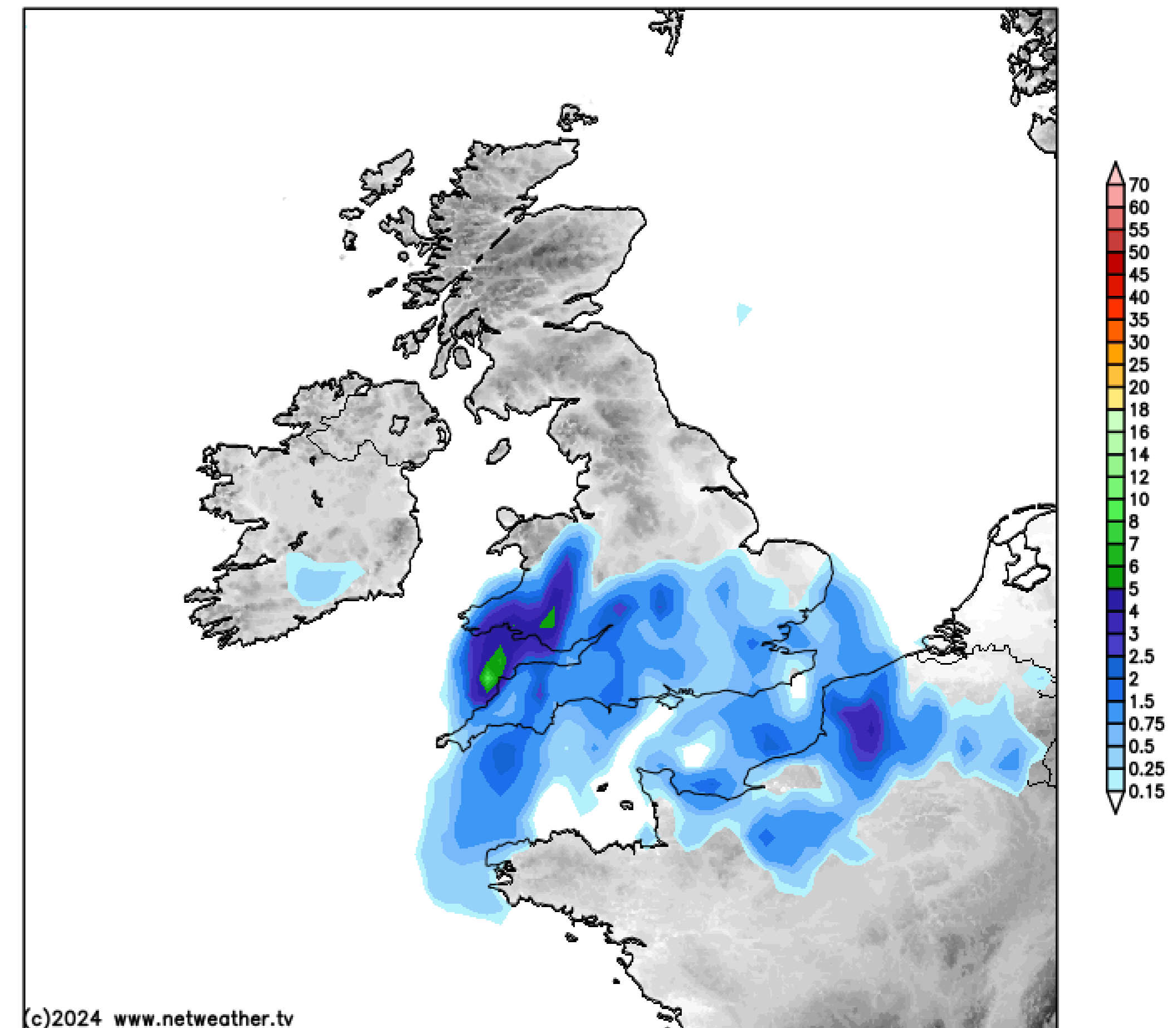


(c)2024 www.netweather.tv

Run: Fri 26/07 00Z

UK precipitation (mm)

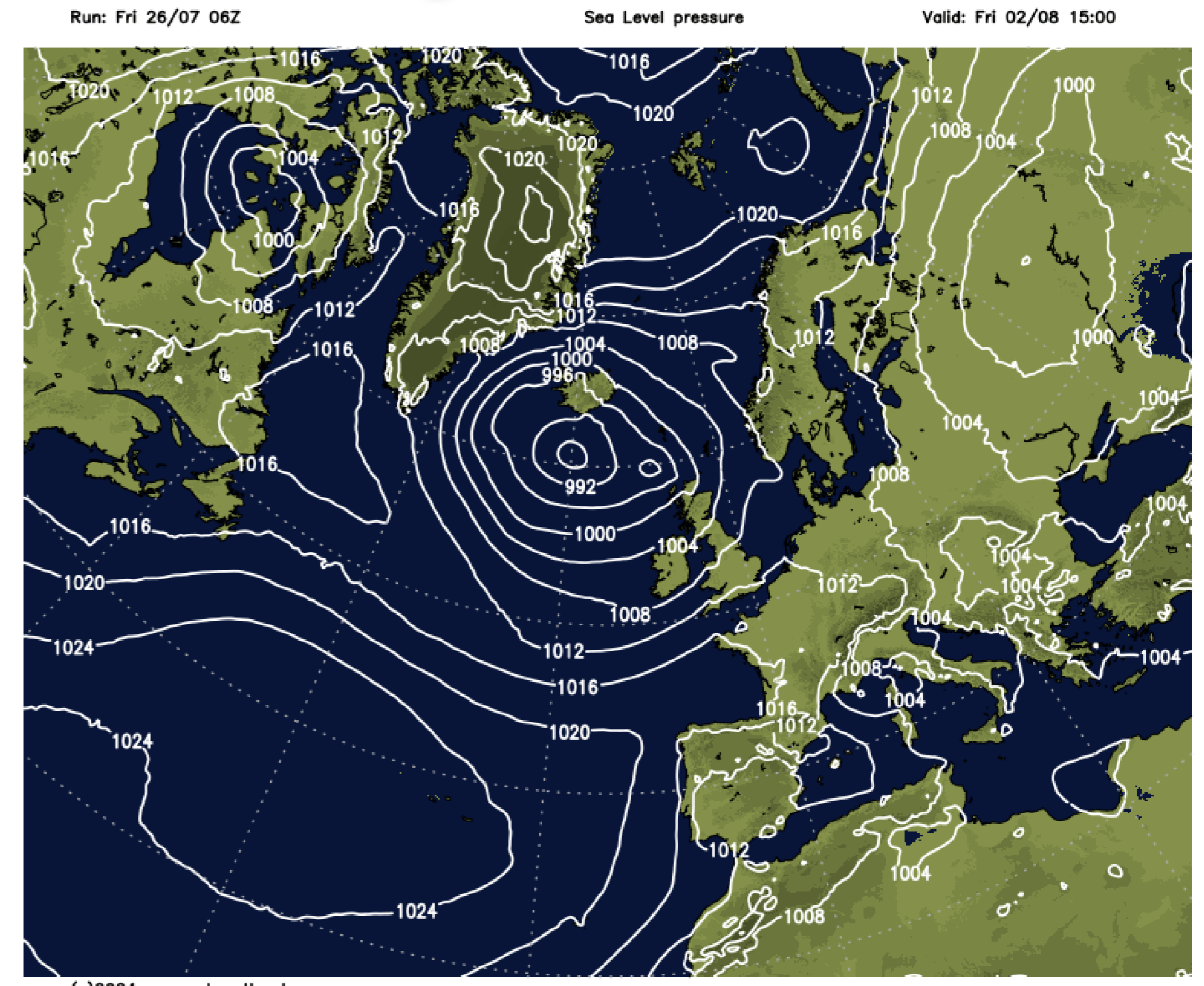
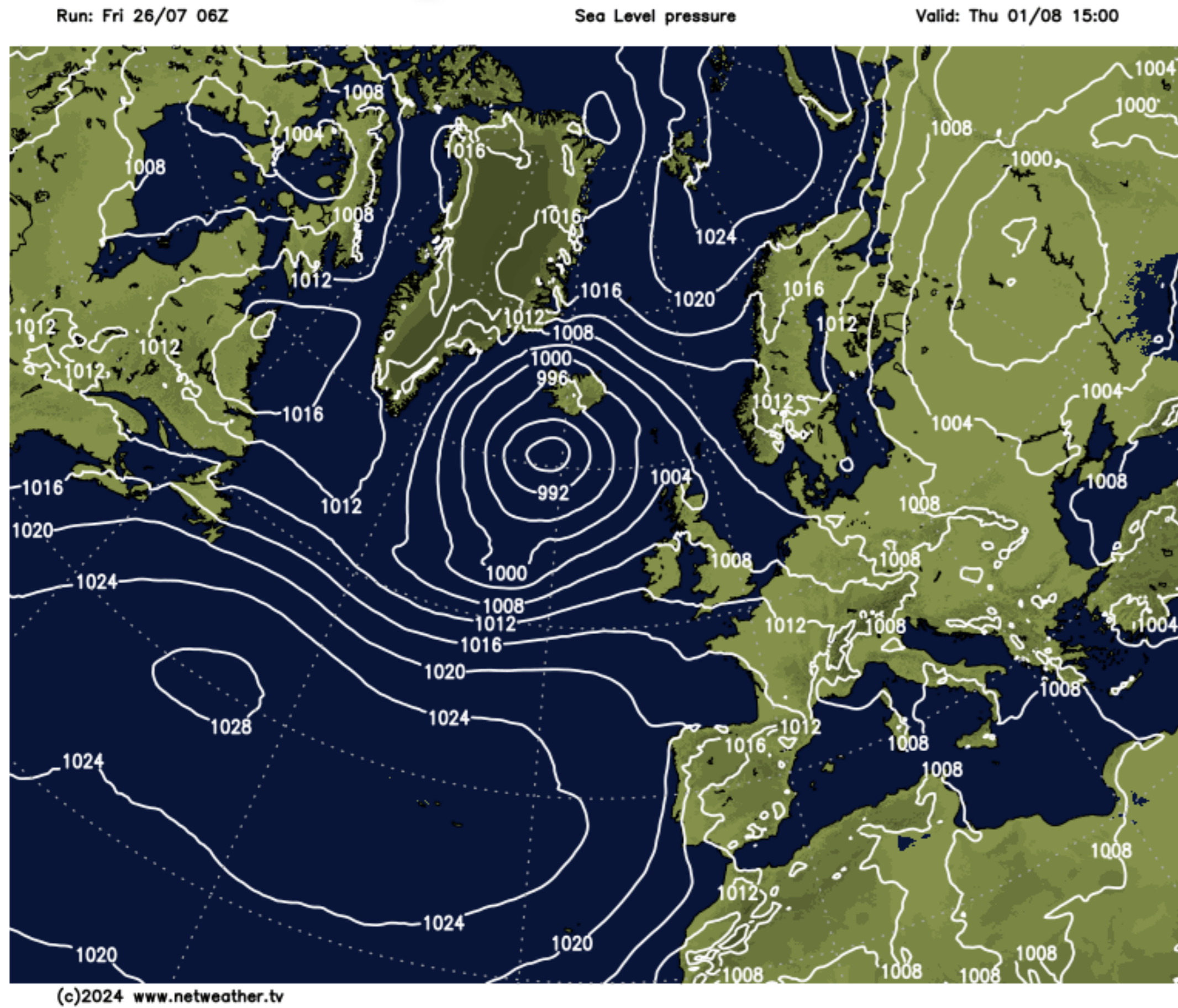
Valid: Wed 31/07 12:00



(c)2024 www.netweather.tv

Low pressure moving N from continent, risk of heavy showers / thunderstorms.
Moderate E/NE'ly winds.

Thursday/Friday



Low pressure NW Scotland approaching from near Iceland, increasing W/WSW'ly winds.



Questions?

